

GENERAL NOTES:

- FOR CURB, GUTTER AND CURB & GUTTER PROVIDE $\frac{1}{4}$ " - $\frac{1}{2}$ " CONTRACTION JOINTS AT 10' CENTERS (MAX.). CONTRACTION JOINTS ADJACENT TO CONCRETE PAVEMENT ON TANGENTS AND FLAT CURVES ARE TO MATCH THE PAVEMENT JOINTS. WITH INTERMEDIATE JOINTS NOT TO EXCEED 10' CENTERS. CURB, GUTTER AND CURB & GUTTER EXPANSION JOINTS SHALL BE LOCATED IN ACCORDANCE WITH SECTION 6520, FDOT STANDARD SPECIFICATIONS.
- ENDS OF TYPE D CURB SHALL TRANSITION FROM FULL TO ZERO HEIGHTS IN 3'.

EXPANSION JOINTS BETWEEN CONCRETE PAVEMENT AND VARIOUS CURB TYPES

1" = 2'

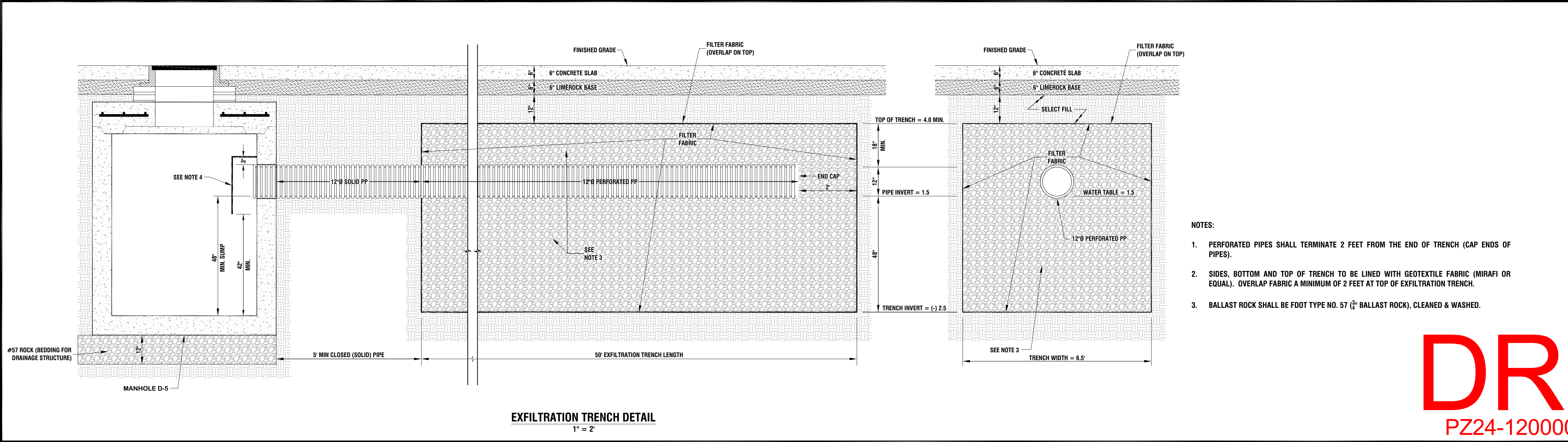
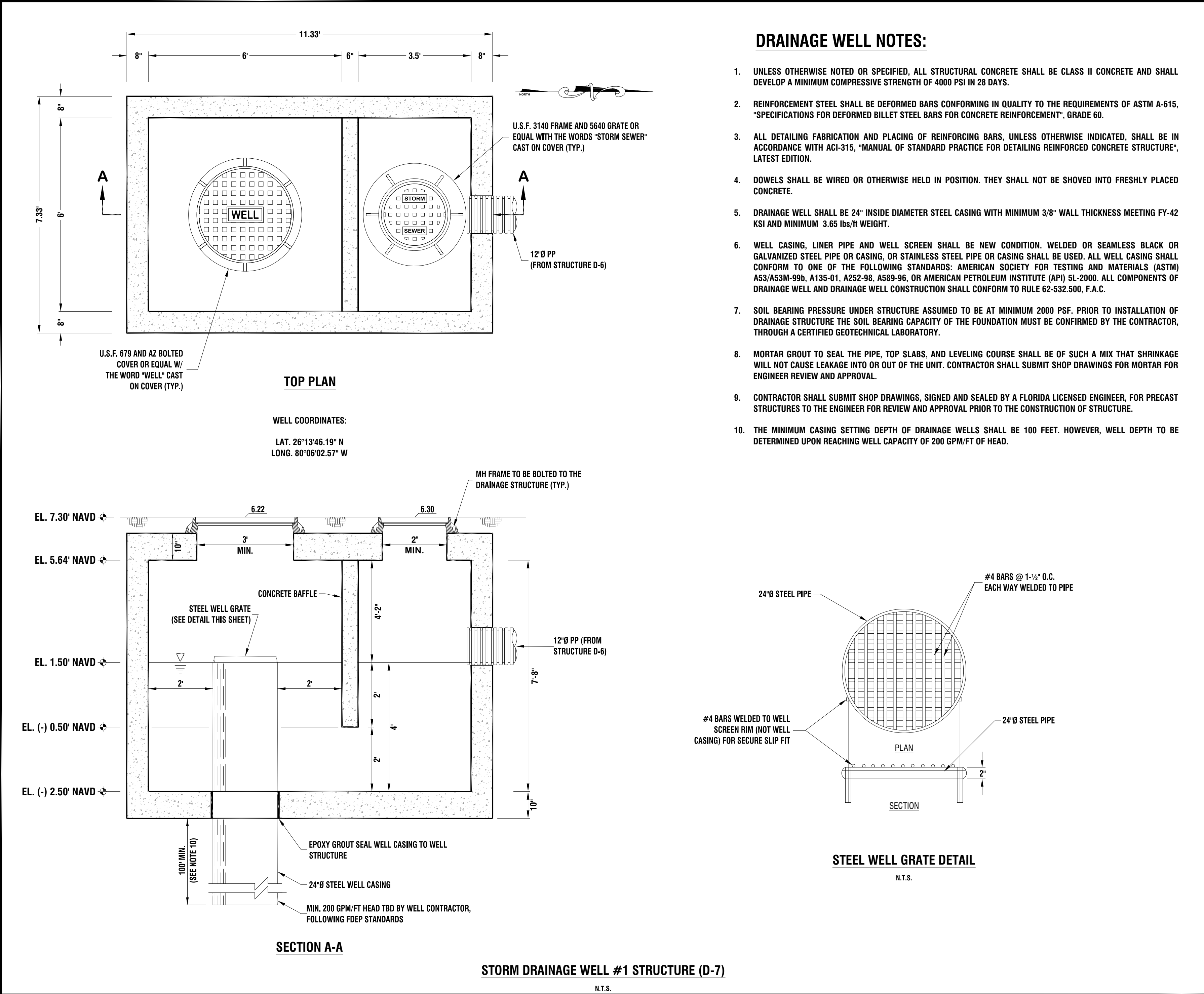
Lou Campanile

Digitally signed by Lou Campanile
DN: cn=Lou Campanile, o=Campanile & Associates, Inc., email=lou@campanile.com, c=US
Date: 2024.09.24 10:52:40 -0400

This item has been digitally signed and sealed by Lou Campanile, Jr., P.E., P.L.S., on the date and time shown in his digital signature.

Printed copies of this document are not considered signed and sealed and the digital signature must be verified on any electronic copies.

REGISTERED
OF
FLORIDA
ENGINEER
No. 36762 • SURVEYOR 43338



DRC

PZ24-12000023
12/18/2024

CAMPANILE & ASSOCIATES, INC.
ENGINEERS PLANNERS SURVEYORS

6420 MAHI DRIVE
CORAL GABLES, FLORIDA 33158-1841
TEL: (305) 971-1988
LB 1678

10/9/24

Lou Campanile, Jr.
Professional Engineer No. 36762
Professional Surveyor No. 43338
State of Florida

for
RJS ARCHITECTS, INC.

ELIAS APARTMENT BUILDING
216 SE 23 AVENUE
POMPANO BEACH, FLORIDA 33062-5304

PAVING, GRADING & DRAINAGE NOTES & DETAILS

PROJECT NO. 5391
DATE 10/9/24

REVISIONS

DRAWING
PG 5-6

SHEET
6 OF 12